

WALK-IN SALT FOG CHAMBERS



ENVISYS
reimagining the environment

ENVISYS
reimagining the environment

WALK-IN SALT FOG CHAMBERS FROM ENVISYS...

Corrosion resistance testing of
your larger sized products...

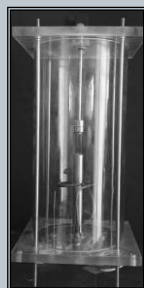


Chamber Construction

- Constructed in single-block and pre-fabricated structures
- The test chamber will be a moisture-sealed and corrosion-proof.
- Chamber inner wall construction will be of SS316 grade
- Outer Side: PCGI (Polymer coated galvanized iron)
- Sandwich(insulation) material: PUF of 100mm thickness
- All fasteners inside the chamber will be non-metallic
- The quality of workmanship in construction of the equipment will be good enough to withstand the environmental condition



Uncompromised features
included at no additional
add-on costs...



Automizer

Saturation tower

Color touch programmer

ENVISYS TECHNOLOGIES PVT LTD

#32 Ligadi Mansion,
Muthurayaswamy Layout
Bangalore – 560 091
KARNATAKA - INDIA
Ph: +91 80 65770603
+91 7411455246
E-mail: help@envisys tech.com
Website: www.envisys tech.com

Fine-fog simulation atomizers

Non-metallic transparent acrylic saturation tower will be used for producing the saturated air

Touch screen based complete user-programmable console capable of controlling chamber & saturator temperature, perform cyclic operations

Inner surface of the panels with PVC sheets for avoiding direct impact of salt fog.

Ceiling of inner shell sloped (as per the ASTM B 117 specification) to prevent condensation from dripping on specimens

The floor of the chamber is protected with non-deteriorating rubber or plastic floor matting, drain and exhaust ports