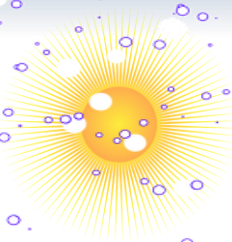


WALK-IN CHAMBERS



EWS-SERIES

WALK-IN

ENVIRONMENTAL CHAMBERS

ENVISYS
reimagining the environment



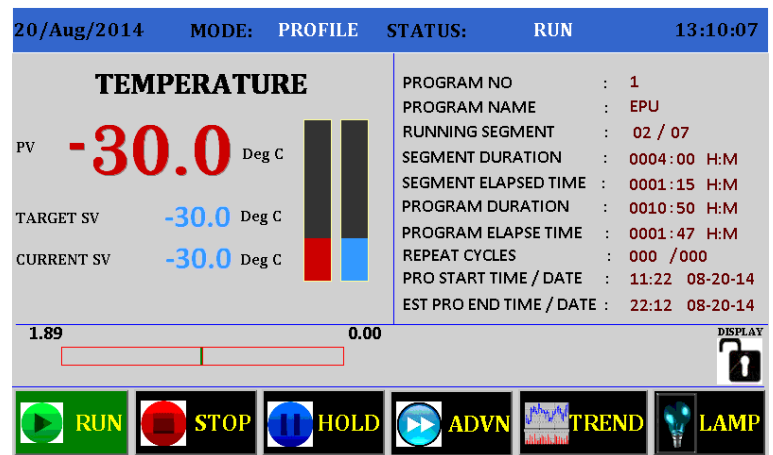


FEATURES:

- Mono-block walk-in chambers are designed for high-temperature operations using high-grade materials
- Pre-fabricated panel structured walk-in chambers are designed for low and medium temperature operations
- Both Water-cooled and Air-cooled mechanical refrigeration system available with hermetic or semi-hermetic compressors for better efficiency
- Configured for temperature and relative humidity conditioning in the system ensuring high temperature accuracies, reliable test results
- Integrated/remote refrigeration compartments and control panel
- High-resolution Colour touch controller with user-friendly graphical programming



Standard Models & Custom-Built



Temperature	EWS8K-35/65T	EWS15K-35/65T	EWS27K-35/65T	Custom - Built
Temp & RH	EWS8K-35/65H	EWS15K-35/65H	EWS27K-35/65H	Custom - Built
Working Volume	8000 Litres	15000 Litres	27000 Litres	Custom - Built
Performance				
Temperature Range	-35/-65 °C to 150 °C (- 31/ - 85 °F to 302 °F) - EWS – Mono Block Series -35/-65 °C to 80 °C (- 31/ - 85 °F to 176 °F) - EWS – Pre-fabricated Series			
Temperature Fluctuation	Better than +/- 2 °C			
Temperature Gradient	2.0 °C	2.5 °C	3.0 °C	
Temperature Heating Rate*	2.0 K /min.	2.0 K / min.	2.0 K / min.	Custom - Built
Temperature Cooling Rate*	1.5 K /min.	1.0 K / min.	1.0 K / min.	Custom - Built
Humidity Range	10%RH to 90%RH (optional)			

ENVISYS TECHNOLOGIES PVT LTD

ISO 9001-2008 Certified Company

#32, Ligadi Mansion, Muthurayaswamy Layout, Sunkadakatte, Bangalore – 560091 Karnataka INDIA

E-mail: help@envisystech.com Ph: +91 80 65770603, 7411455246, 9880953742 www.envisystech.com