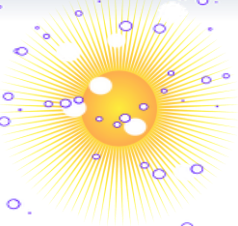


WALK-IN ENVIRONMENTAL CHAMBERS



EWS-SERIES

WALK-IN

ENVIRONMENTAL CHAMBERS

ENVISYS
reimagining the environment



Conceptualizing your need for large test space into reality...

Mono-block/Pre-fabricated design EWS-Series Walk-in Environmental Chambers with custom-built features to meet testing needs of large-sized test specimens

- Mono-block walk-in chambers are designed for high-temperature operations using high-grade materials
- Pre-fabricated panel structured walk-in chambers are designed for low and medium temperature operations
- Both Water-cooled and Air-cooled mechanical refrigeration system available with hermetic or semi-hermetic compressors for better efficiency
- Configured for temperature and relative humidity conditioning in the system ensuring high temperature accuracies, reliable test results
- Integrated/remote refrigeration compartments and control panel

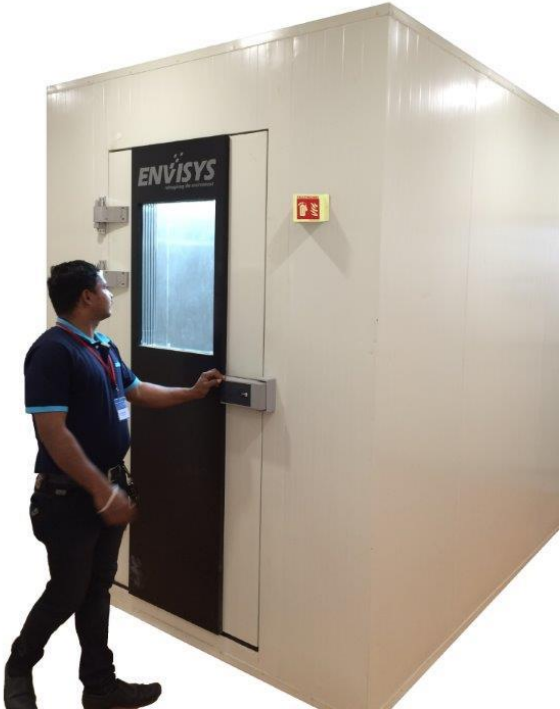
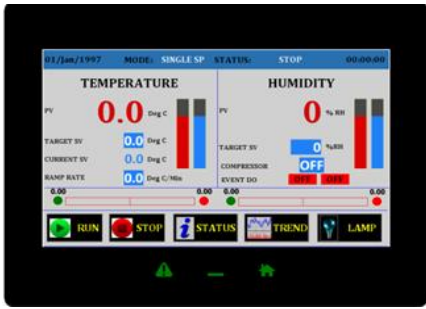


STANDARD MODELS:

| Parameters | Specifications |
|-------------------------|--|
| EWS10K -35T/65T 35H/65H | 2200X2200X2000 MM - Work Space |
| EWS12K -35T/65T 35H/65H | 2200X2200X2400 MM - Work Space |
| EWS14K -35T/65T 35H/65H | 2200X3100X2000 MM - Work Space |
| EWS16K -35T/65T 35H/65H | 2200X3100X2400 MM - Work Space |
| EWS18K -35T/65T 35H/65H | 2200X4100X2400 MM - Work Space |
| EWS22K -35T/65T 35H/65H | |
| Volume | 10000,12000,14000, 16000, 18000 & 22000 Liters |
| Temp | -35 / -65 to 180 °C |
| Relative Humidity | 10 to 95% RH |

CONTROL CONSOLE:

- ET-touch color touch programmer
- RS-232, RS-485, USB, Ethernet and USB host port
- Height adjustable specimen racks
- Cable ports
- Built-in web server which allows remote monitoring and operation of your test chamber from any internet connected PC or Smart Phone



Optionals:

- Remote Control Console



ENVISYS TECHNOLOGIES PVT LTD
ISO 9001-2015 Certified Company