

ETS-SERIES THERMAL SHOCK CHAMBER

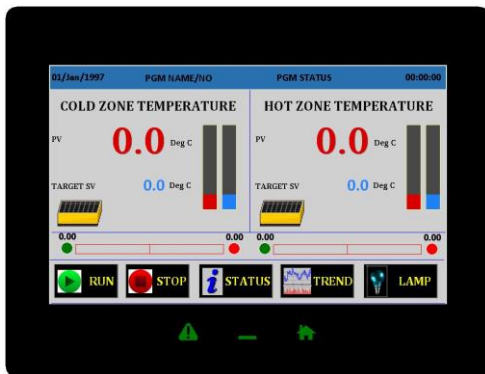
ETS-Series air-to-air and liquid-to-liquid Thermal Shock Chambers from Envisys are available in different volumes to suit the varied testing needs. Horizontal or vertical models consisting of cold and hot zones with product carrier basket of sizes 50, 100, 150, 300, 600 and 900 litres which transfers the specimen under test between cold and hot zones using electro pneumatic / motorized basket movement.

Models:

Parameters	Specifications
ETS – 50	500 X 350 X 300 MM
ETS - 100	500 X 500 X 400 MM
ETS – 150	600 X 500 X 500 MM
ETM- 300	800 X 750 X 500 MM
ETM – 600	900 X 900 X 750 MM
ETM - 900	1000 X 1000 X 900 MM
Volume	50,100,150,300,600 & 900 Liters
Temp	-70 to 200°C
Basket Transition Time	< 10 Secs

Construction:

Made of SS interiors and CRCS Powder coated exterior panels



ET-touch color touch programmer

RS-232, RS-485, USB, Ethernet and USB host port

Height adjustable specimen racks

Cable ports

Built-in web server which allows remote monitoring and operation of your test chamber from any internet connected PC or Smart Phone

Environmental Stress Screening Tests using Envisys Thermal Shock Chambers ...



VERTICAL BASKET CHANGEOVER