



**EBS/ECS- SERIES**

**SALT SPRAY CHAMBERS**

**ENVISYS**  
*reimagining the environment*

# TEST CHAMBER DESIGNED WITH USER IN MIND...



## Corrosion resistance testing of your products...

**EBS/ECS Series** Salt Spray Chambers (Basic & Cyclic) are manufactured by Envisys in different versions to meet the diverse testing applications as per various international standards viz., ASTM, DIN, GM, JIS, MIL etc.,

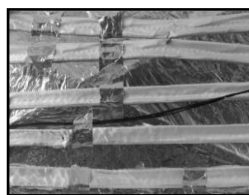
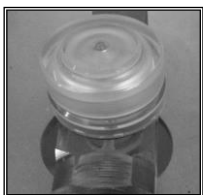
- *Made of high corrosive resistant non-metallic glass-fibre reinforced structure*
- *Single block design with easy access and maintenance free sections*
- *Available in varied sizes to suit your diverse testing applications*



Brine-solution tub

Chamber interior work-space

## Uncompromised features included at no additional add-on costs...



Fine-fog simulation atomizer

Regulated humidity/saturation tower for producing saturated humid air

Low-density ceramic layer rope-heaters bonded outside the tank with aluminium foil rapping for uniform conduction of temperature

Hanging rods and slotted angle racks for hanging/placing the specimen

Maintenance free independent removable brine solution reservoir tub

User friendly control desk with automatic pneumatic guided door opening

### STANDARD MODELS – BASIC & CYCLIC VERSIONS

Standard Volumes	300,600,900 &1500 Liters
Chamber Temp	Adjustable from ambient to 50°C
Saturator Temp	Adjustable from ambient to 65°C
Humidity	Saturation / Controlled Humidity - optional

# EVERYTHING YOU NEED IN A TEST CHAMBER...

*Optional control consoles as per customer choice for Basic and Cyclic versions*

*Single Set Point PID Controller OR Color Touch Programmer*

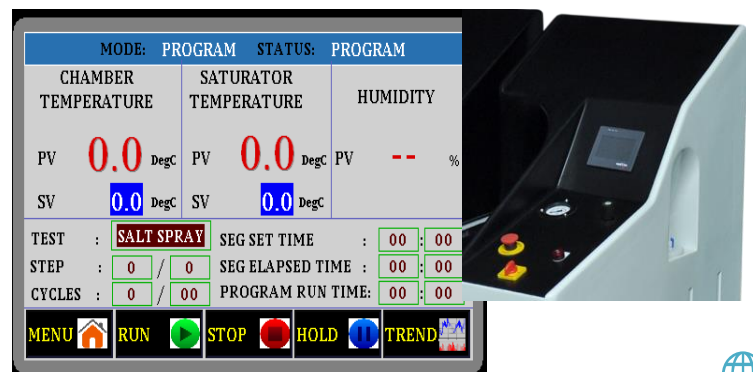
## Basic Version

- Integrated control panel
- Temperature control system will be single set point
- Microprocessor based PID controller with precise temperature control



## Cyclic Version

- Touch screen based complete user-programmable console capable of controlling chamber & saturator temperature, perform cyclic operations
- Individual event selection of dry cycle, high humidity cycle etc.,
- Min 5 Nos of programmable timers for alarm activation



## EMS-SERIES

### MINI - Salt Spray Chambers

Space Saving & Cost Competitive.....



## OPTIONAL ACCESSORIES

ECS-01	Opt Accessory for Renault D172028 (ECC-1)
ECS-02	Remote Refrigeration Unit RRU/A1, RRU/A2
ECS-03	Spray Header Cycle (Vertical Down)
ECS-04	Immersion Test Cycle
ECS-05	Wall Wash
ECS-06	SO2 Gas Dozing
ECS-07	De-Humidifier Unit
ECS-08	Multi-Solution Salt Spray
ECS-09	Drain Treatment Unit

## ENVISYS EBS/ECS SALT SPRAY CHAMBER MODELS

Basic Salt Spray	EBS -300	EBS -600	EBS -900	EBS -1500
Cyclic Salt Spray	ECS -300	ECS -600	ECS -900	ECS -1500
Working Volume	300 liters ( 10 cu.ft )	600 liters ( 21 cu.ft )	900 liters ( 32 cu.ft )	1500 liters ( 53 cu.ft )
<b>Performance</b>				
Chamber Temperature Range	Adjustable from Ambient to 50 deg C(122 deg F).			
Saturator Temperature Range	Adjustable from Ambient to 65 deg C (150 deg F).			
Salt Spray fall-out rate.	Adjustable from 0.5 to 2.5 ml/hr (Measured in 80 cm2 area)			
Dry Cycle Mode	Temperature Range : Adjustable from Ambient to 50 deg C (122 deg F).			
	Humidity Range : Uncontrolled.			
Wet Cycle Mode	Temperature Range : Adjustable from Ambient to 50 deg C (122 deg F).			
	Humidity Range : 95-100%RH. (Saturated Humidity )			
Controlled High Humidity	Temperature Range : Adjustable from 40 to 60 deg C (140 deg F).			
	Humidity Range : Adjustable from 60%RH to 95%RH.			
Dwell Cycle Mode	Temperature Range : Uncontrolled			
	Humidity Range : Uncontrolled			
<b>Dimensions</b>				
Interior dimensions (Test space )	W 850 mm	W 900 mm	W 1350 mm	W 1500 mm
	D 550 mm	D 800 mm	D 800 mm	D 1000 mm
	H 650 mm	H 850 mm	H 850 mm	H 1000 mm
Exterior dimensions	W 1720 mm	W 1770 mm	W 2220 mm	W 2370 mm
	D 850 mm	D 1100 mm	D 1100 mm	D 1300 mm
	H 1300 mm	H 1500 mm	H 1500 mm	H 1700 mm
<b>Other provisions</b>				
Loading Threshold	850 mm	1050 mm	1050 mm	1200 mm
Salt Solution Internal Capacity	125 liters	175 liters	175 liters	225 liters
Specimen Hanging Bars	5	5	8	8
Specimen Hanging Capacity	2 kg	3 kg	3 kg	4 kg
Adjustable Slated Angle Rack	One			
Chamber Construction	Glass reinforced plastic and Fiber reinforced plastic.			
<b>Installation Site Requirements</b>				
Power Supply	200-240VAC 1 Phase 50/60Hz 2-wire and Earth.			
	Optionally Available Voltage (VAC) and Frequency (Hz) Depending on the Country/Installation Site			
Max Connected load	2.5 Kw	3.0 kw	3.5 kw	4.0 kw
Water Supply	Deminaralized/Deionized continuous water connection 0.5-3.0 bar (7.3-45 psi).			
Air Supply	Clean dry & oil free, Pressure 4.0 to 6.0 bar (58-87psi). Flow, 6cfm to 10cfm.			
Drain	25 mm female BSP threaded provision with 3m (10ft) flexible drain pipe provided.			
Exhaust	50 mm female BSP threaded provision provided (Exhaust should be terminated out side the building).			
Operating Environment	15 to 35°C (59 to 95°F), 85% max RH non condensing ambient			

After sale service is an integral part of our business: Our services include complete technical and engineering support to our customers round the clock, repair, maintenance, refurbishments, spare parts etc.,

## ENVISYS TECHNOLOGIES PVT LTD