



Safe Testing of Batteries against Environmental Stresses.....



Envisys - Environmental Chambers for Battery Testing are designed and manufactured to meet various types of battery testing requirements of its customers by keeping all safety options in mind against any harmful explosions or ignitions and user safety while testing these batteries for environmental stress conditions



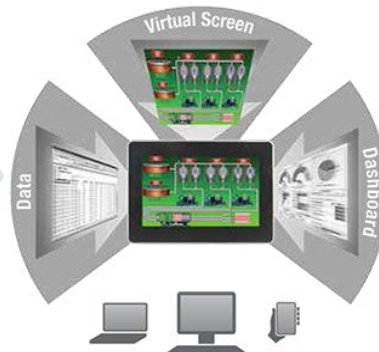
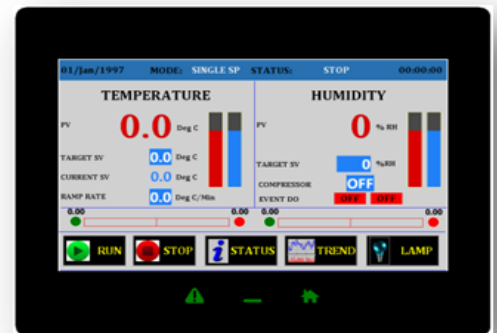
Available Range	600, 950 and 1400 Liters
Temperature	-40/-70 deg C to 180 deg C
RH	10% to 95% (optional)

ET-touch Programmer

ET-color touch programmer with built in web server for monitoring and operating from any internet connected PC or smartphone



Communication ports viz., RS-232, RS-485, USB, Ethernet and USB host port and many other in-built operation and security features



ET-touch controller is custom designed to work with Envisys's Environmental Testing chambers. The controller hardware is built with high performance industrial grade colour touch screen which allows the user to experience clear view of the chamber parameters. The software is designed for user friendly operation with highest level of safety and optimized chamber performance